

EW0-300

ExtremeNetworks

Extreme Networks Specialist (ENS)

Visit: <http://www.pass4sureofficial.com/exams.asp?examcode=EW0-300>

Pass4sureofficial.com is a reputable IT certification examination guide, study guides and audio exam provider, we not only ensure that you pass your EW0-300 exam in first attempt, but also you can get a high score to acquire ExtremeNetworks certification.

If you use pass4sureofficial EW0-300 Certification questions and answers, you will experience actual EW0-300 exam questions/answers. We know exactly what is needed and have all the exam preparation material required to pass the exam. Our ExtremeNetworks exam prep covers over 95% of the questions and answers that may be appeared in your EW0-300 exam. Every point from pass4sure EW0-300 PDF, EW0-300 review will help you take ExtremeNetworks EW0-300 exam much easier and become ExtremeNetworks certified. All the Questions/Answers are taken from real exams.

Here's what you can expect from the Pass4sureOfficial ExtremeNetworks EW0-300 course:

- * Up-to-Date ExtremeNetworks EW0-300 questions taken from the real exam.*
- * 100% correct ExtremeNetworks EW0-300 answers you simply can't find in other EW0-300 courses.*
- * All of our tests are easy to download. Your file will be saved as a EW0-300 PDF.*
- * ExtremeNetworks EW0-300 brain dump free content featuring the real EW0-300 test questions.*

ExtremeNetworks EW0-300 certification exam is of core importance both in your Professional life and ExtremeNetworks certification path. With ExtremeNetworks certification you can get a good job easily in the market and get on your path for success. Professionals who passed ExtremeNetworks EW0-300 exam training are an absolute favorite in the industry. You will pass ExtremeNetworks EW0-300 certification test and career opportunities will be open for you.



QUESTION 1

When limit-learning is configured on a port and the limit is reached the following traffic still flows to the port.

- A. Packets destined for the active Mac addresses
- B. Broadcast traffic
- C. EDP traffic
- D. All of the above

Answer: D

QUESTION 2

Extreme ware 7.0 supports both level1 and level 2 IS-IS routers.

- A. TRUE
- B. FALSE

Answer: A

QUESTION 3

The integrated IS-IS protocol allows for mixing of IP-only,OSI-only, and dual (IP and OSI) routers.

- A. True
- B. False

Answer: A

QUESTION 4

In OSPF, the router type that is required to connect an area with another area is the:

- A. Designated Router
- B. Back-up Designated Router
- C. ASBR
- D. ABR

Answer: D

QUESTION 5

EAPS protection switching is similar to what can be achieved with the Spanning Tree Protocol but one of the big advantages of EAPS is:

- A. EAPS also supports star topologies
- B. EAPS has a recovery time of less than a second in case of link failure.

EW0-300

- C. An EAPS domain supports multiple root bridges, thus alternative path
- D. EAPS eliminates the need for protocols like ESRP or VRRP that bring default gateway redundancy.

Answer: B

QUESTION 6

On a RADIUS server you can distinguish between switch access and Netlogin authentication. Extreme provides a vendor specific attribute

Extreme:Extreme-Netlogin-only =disabled/enabled.

User authentication for both Netlogin and switch access is allowed when the value is disabled.

When the value enabled user authentication is restricted to Netlogin only.

- A. True
- B. False

Answer: A

QUESTION 7

The following modes of operation are supported with the Network login feature. (choose all that apply)

- A. Secure mode
- B. Campus mode
- C. Quick Mode
- D. ISP mode

Answer: A,B,C,D

QUESTION 8

An LSP is a link state packet used by which routing protocol?

- A. OSPF
- B. RIP
- C. BGP
- D. None of these

Answer: D

QUESTION 9

It is possible to set an STP-threshold to switch from a shared tree to a shortest path tree. This switch over will be initiated by:

- A. The Rendezvous Point
- B. The Bootstrap Router

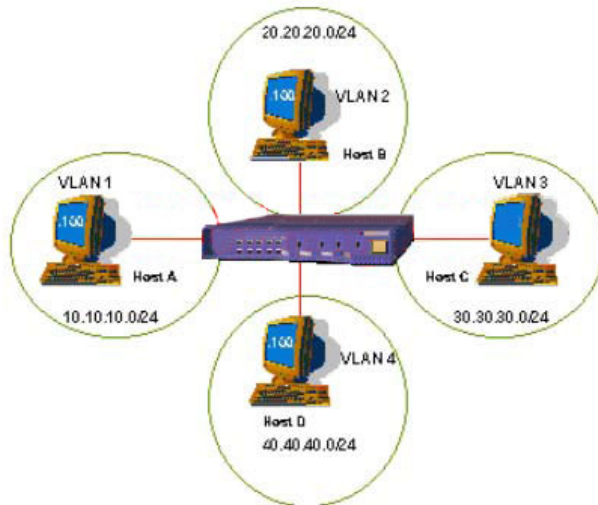
EW0-300

- C. A last hop router
- D. The router nearest to the source

Answer: C

QUESTION 10

Exhibit:



```
create access-list ip1 ip destination 20.20.20.100/32 source 10.10.10.100/32 permit ports any ignore-overlap
create access-list ip2 ip destination 30.30.30.100/32 source 10.10.10.100/32 permit ports any ignore-overlap
create access-list ip3 ip destination 40.40.40.100/32 source 10.10.10.100/32 permit ports any ignore-overlap
create access-list ip4 ip destination 10.10.10.100/32 source 20.20.20.100/32 permit ports any ignore-overlap
create access-list ip5 ip destination 10.10.10.100/32 source 30.30.30.100/32 permit ports any ignore-overlap
create access-list ip6 ip destination 10.10.10.100/32 source 40.40.40.100/32 permit ports any ignore-overlap
create access-list default rule ip destination any source any deny ports any
```

According to accompanying diagram and ACL configuration it is possible for Host A (10.10.10.100) and Host C (30.30.30.100) to successfully communicate.

- A. TRUE
- B. FALSE

Answer: A

QUESTION 11

The maximum number of EAPS domains supported per switch and ring is?

- A. 64
- B. 32
- C. 16
- D. 8

Answer: A

QUESTION 12

In Extreme Ware, which one of the following is an optional ESRP configuration

Pass4SureOfficial.com Lifetime Membership Features;

- Pass4SureOfficial Lifetime Membership Package includes over **2500** Exams.
- **All** exams Questions and Answers are included in package.
- **All** Audio Guides are included **free** in package.
- **All** Study Guides are included **free** in package.
- **Lifetime** login access.
- Unlimited download, no account expiry, no hidden charges, just one time \$99 payment.
- **Free updates** for Lifetime.
- **Free Download Access** to All new exams added in future.
- Accurate answers with explanations (If applicable).
- Verified answers researched by industry experts.
- Study Material **updated** on regular basis.
- Questions, Answers and Study Guides are downloadable in **PDF** format.
- Audio Exams are downloadable in **MP3** format.
- **No authorization** code required to open exam.
- **Portable** anywhere.
- 100% success **Guarantee**.
- **Fast**, helpful support 24x7.

View list of All exams (Q&A) downloads

<http://www.pass4sureofficial.com/allexams.asp>

View list of All Study Guides (SG) downloads

<http://www.pass4sureofficial.com/study-guides.asp>

View list of All Audio Exams (AE) downloads

<http://www.pass4sureofficial.com/audio-exams.asp>

Download All Exams Samples

<http://www.pass4sureofficial.com/samples.asp>

To purchase \$99 Lifetime Full Access Membership click here

<http://www.pass4sureofficial.com/purchase.asp>

3COM	CompTIA	Filemaker	IBM	LPI	OMG	Sun
ADOBE	ComputerAssociates	Fortinet	IISFA	McAfee	Oracle	Sybase
APC	CWNP	Foundry	Intel	McData	PMI	Symantec
Apple	DELL	Fujitsu	ISACA	Microsoft	Polycom	TeraData
BEA	ECCouncil	GuidanceSoftware	ISC2	Mile2	RedHat	TIA
BICSI	EMC	HDI	ISEB	NetworkAppliance	Sair	Tibco
CheckPoint	Enterasys	Hitachi	ISM	Network-General	SASInstitute	TruSecure
Cisco	ExamExpress	HP	Juniper	Nokia	SCP	Veritas
Citrix	Exin	Huawei	Legato	Nortel	See-Beyond	Vmware
CIW	ExtremeNetworks	Hyperion	Lotus	Novell	SNIA	

