

# 920-245

## Nortel

### Ethernet Switching

*OfficialCerts.com is a reputable IT certification examination guide, study guides and audio exam provider. We ensure that you pass your 920-245 exam in first attempt and also get high scores to acquire Nortel certification.*

*If you use OfficialCerts 920-245 Certification questions and answers, you will experience actual 920-245 exam questions/answers. We know exactly what is needed and have all the exam preparation material required to pass the exam. Our Nortel exam prep covers over 95% of the questions and answers that may be appeared in your 920-245 exam. Every point from pass4sure 920-245 PDF, 920-245 review will help you take Nortel 920-245 exam much easier and become Nortel certified.*

*Here's what you can expect from the OfficialCerts Nortel 920-245 course:*

- \* Up-to-Date Nortel 920-245 questions as experienced in the real exam.*
- \* 100% correct Nortel 920-245 answers you simply can't find in other 920-245 courses.*
- \* All of our tests are easy to download. Your file will be saved as a 920-245 PDF.*
- \* Nortel 920-245 brain dump free content featuring the real 920-245 test questions.*

*Nortel 920-245 certification exam is of core importance both in your Professional life and Nortel certification path. With Nortel certification you can get a good job easily in the market and get on your path for success. Professionals who passed Nortel 920-245 exam training are an absolute favorite in the industry. You will pass Nortel 920-245 certification test and career opportunities will be open for you.*

<http://janetdailey.com/?certs=exams.asp?examcode=920-245>

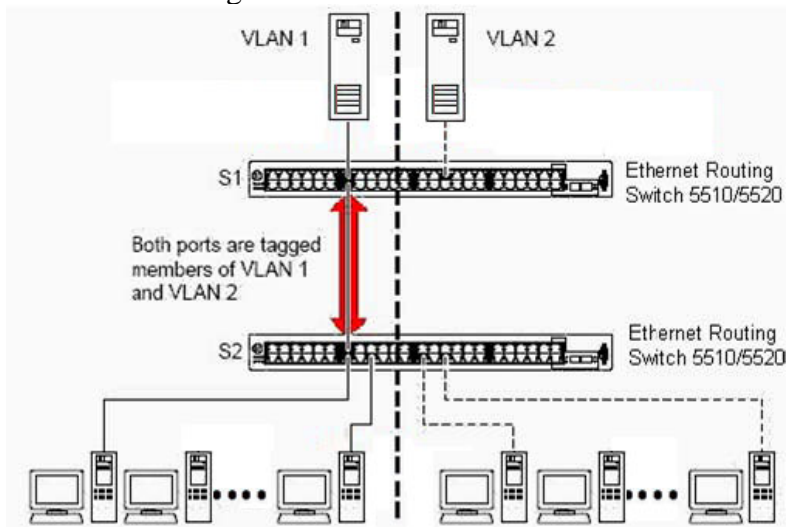


---

**QUESTION 1**

The exhibit shows VLANs spanning two Ethernet Routing Switch 5510/5520s. Both port 14 on S1 and port 13 on S2, identified by the red arrow, are tagged members of VLAN 1 and VLAN 2.

How is this configured?



- A. By ensuring that the tagging checkbox is checked on the configuration screens for VLAN 1 and VLAN 2.
- B. By enabling 802.1Q tagging on both port 14 of S1 and port 13 of S2.
- C. This VLAN configuration is incorrect and must be configured differently to work.
- D. Tagging is automatically configured because port 13 of S2 is already in VLAN 1.

Answer: B

---

**QUESTION 2**

You recently reset an Ethernet Routing Switch 5510 using 4.1 code to the factory default settings. You want to upgrade the code for the 5510 but do not have a console cable to do it. Which IP address must you use to perform this task?

- A. 192.168.1.1/24
- B. 192.168.192.168/24
- C. 192.168.10.1/24
- D. 192.168.168.192/24

Answer: B

---

**QUESTION 3**

Certkiller .com wants port mirroring configured on an Ethernet Switch 470-48T. They want port 23 configured as the monitor port to monitor all traffic received and transmitted between a workstation on port 24 (port Y) and a workstation on port 25 (port X). Once you access the "Port Mirroring Configuration" screen using the Console Interface

(CI) Menus, which field should you select?

- A. <->Port X or Port Y <->
- B. <->Port X and Port Y <->
- C. ->Port X or Port Y ->
- D. ->Port X and Port Y ->

Answer: B

---

#### **QUESTION 4**

An engineer configures a single instance of Virtual Router Redundancy Protocol (VRRP) across two Ethernet Routing Switch 8600s. One Ethernet Routing Switch 8600 is configured with a VRRP Priority of 255 and the other is configured with a VRRP Priority of 100. During testing the engineer notices that both Ethernet Routing Switch 8600s are in Master state. What is a possible cause for this?

- A. The Ethernet Routing Switch 8600 VRRP instances have been configured with the same VRID.
- B. A critical IP interface has not been configured for the Ethernet Routing Switch 8600 with a VRRP Priority of 100.
- C. VRRP has been configured on a VLAN on one 8600 and on a brouter port on the other 8600.
- D. The Ethernet Routing Switch 8600 VRRP instances have been configured with different VRIDs.

Answer: D

---

#### **QUESTION 5**

To monitor the performance of an Ethernet switched network, why would you use Enterprise Network Management System OmniView instead of Java Device Manager (JDM)?

- A. OmniView supports RMON while JDM does not.
- B. JDM is incapable of supporting the Business Policy Switch while OmniView supports it.
- C. OmniView can present statistics in both graphical and tabular formats while JDM only supports tabular formats.
- D. JDM works with individual network components while OmniView works with subnets and LAN segments.

Answer: D

---

#### **QUESTION 6**

Which three statements are true regarding RMON alarms? (Choose three.)

- A. Alarms can only be viewed by Device Manager.

## OfficialCerts.com Certification Exam Full Version Features;

- Verified answers researched by industry experts.
- Exams **updated** on regular basis.
- Questions, Answers are downloadable in **PDF** format.
- **No authorization** code required to open exam.
- **Portable** anywhere.
- 100% success **Guarantee**.
- **Fast**, helpful support 24x7.

View list of All exams we offer;

<http://www.officialcerts.com/allexams.asp>

To contact our Support;

<http://www.officialcerts.com/support.asp>

View FAQs

<http://www.officialcerts.com/faq.asp>

Download All Exams Samples

<http://www.officialcerts.com/samples.asp>

To purchase Full Version and updated exam;

<http://www.officialcerts.com/allexams.asp>



Shop now using **PayPal**



3COM	CompTIA	Filemaker	IBM	LPI	OMG	Sun
ADOBE	ComputerAssociates	Fortinet	IISFA	McAfee	Oracle	Sybase
APC	CWNP	Foundry	Intel	McData	PMI	Symantec
Apple	DELL	Fujitsu	ISACA	Microsoft	Polycom	TeraData
BEA	ECCouncil	GuidanceSoftware	ISC2	Mile2	RedHat	TIA
BICSI	EMC	HDI	ISEB	NetworkAppliance	Sair	Tibco
CheckPoint	Enterasys	Hitachi	ISM	Network-General	SASInstitute	TruSecure
Cisco	ExamExpress	HP	Juniper	Nokia	SCP	Veritas
Citrix	Exin	Huawei	Legato	Nortel	See-Beyond	Vmware
CIW	ExtremeNetworks	Hyperion	Lotus	Novell	Google	

*You have made the*  
**Right Choice**

You are becoming member of most comprehensive, accurate, highest quality and lowest cost certification resource in the world.

