

# 70-227

## Microsoft

### *Installing, Configuring, and Administering Microsoft Internet Security and Acceleration (ISA) Server 2000, Enterprise Edition*

Visit: <http://www.pass4sureofficial.com/exams.asp?examcode=70-227>

Pass4sureofficial.com is a reputable IT certification examination guide, study guides and audio exam provider, we not only ensure that you pass your 70-227 exam in first attempt, but also you can get a high score to acquire Microsoft certification.

If you use pass4sureofficial 70-227 Certification questions and answers, you will experience actual 70-227 exam questions/answers. We know exactly what is needed and have all the exam preparation material required to pass the exam. Our Microsoft exam prep covers over 95% of the questions and answers that may be appeared in your 70-227 exam. Every point from pass4sure 70-227 PDF, 70-227 review will help you take Microsoft 70-227 exam much easier and become Microsoft certified. All the Questions/Answers are taken from real exams.

Here's what you can expect from the Pass4sureOfficial Microsoft 70-227 course:

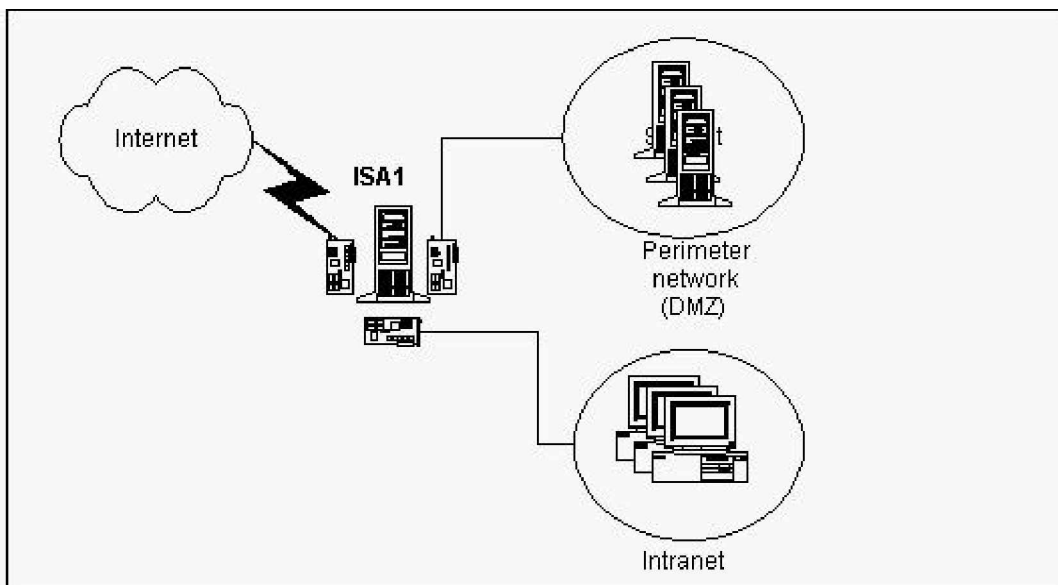
- \* Up-to-Date Microsoft 70-227 questions taken from the real exam.
- \* 100% correct Microsoft 70-227 answers you simply can't find in other 70-227 courses.
- \* All of our tests are easy to download. Your file will be saved as a 70-227 PDF.
- \* Microsoft 70-227 brain dump free content featuring the real 70-227 test questions.

Microsoft 70-227 certification exam is of core importance both in your Professional life and Microsoft certification path. With Microsoft certification you can get a good job easily in the market and get on your path for success. Professionals who passed Microsoft 70-227 exam training are an absolute favorite in the industry. You will pass Microsoft 70-227 certification test and career opportunities will be open for you.



**QUESTION: 1**

You are configuring a computer named ISA1. You will use this computer as the ISA Server computer for your company intranet. You set up ISA1 so that it is connected to three different physical networks. The resulting configuration is shown in the exhibit. (Click the Exhibit button.) You also plan to add a Web server and an FTP server to the perimeter network (also known as the DMZ). Users on the Internet should be able to access the servers in the DMZ by using FTP and HTTP. Client computers on the company intranet should be able to connect to file shares on the servers in the DMZ. You need to configure ISA1 to support this functionality. Which two actions should you take? (Each correct answer presents part of the solution. Choose two.)



- A. On ISA1, enable Routing and Remote Access and enable the computer as a router.
- B. In the Properties page for the IP packet filters of ISA1, enable IP routing and packet filtering.
- C. In the local address table of ISA1, include the address for the network adapter that is connected to the DMZ.
- D. In the local address table of ISA1, exclude the address for the network adapter that is connected to the company intranet.
- E. In the local address table of ISA1, exclude the address range for the DMZ.

**Answer:** B, E

**QUESTION: 2**

You are the network administrator of a branch office for your company. The branch office and the main office are connected by a dedicated fractional T1 line. The main office includes an array of ISA Server computers. You use group policies and DHCP to administer the configuration of all client computers, which run Microsoft Windows 2000

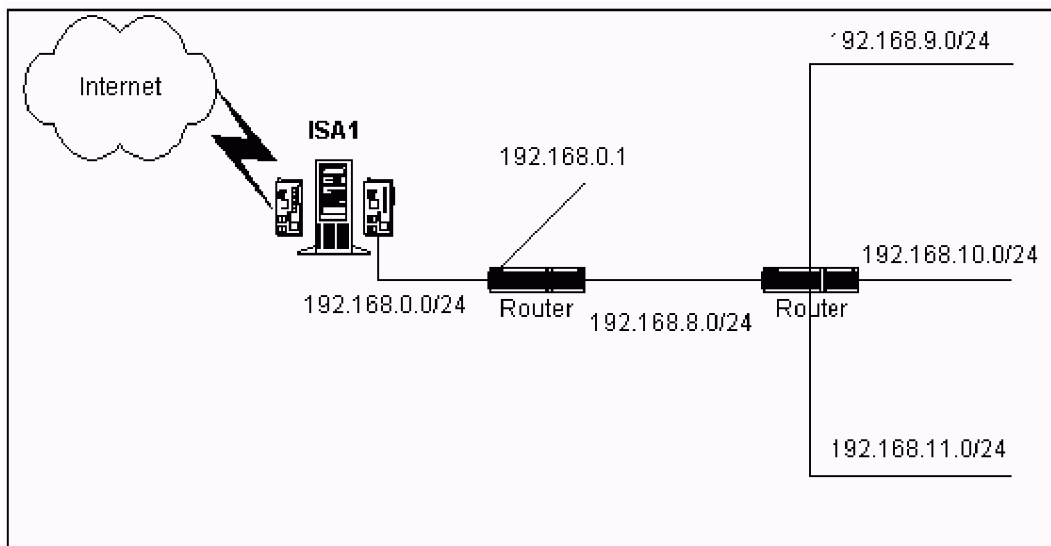
Professional. You need to install ISA Server at the branch office to improve the performance of FTP and HTTP requests from your client computers. Your configuration must take advantage of the cache on the ISA Server array in the main office. What should you do?

- A. Install ISA Server in integrated mode. Use DHCP to configure the client computers at the branch office with the internal IP address of your ISA Server computer as the default gateway.
- B. Install ISA Server in cache mode. Use DHCP to configure the client computers at the branch office with the internal IP address of your ISA Server computer as the default gateway.
- C. Install ISA Server in integrated mode. Use DHCP to provide the location of the WPAD.DAT file to the client computers at the branch office.
- D. Install ISA Server in cache mode. Use DHCP to provide the location of the WPAD.DAT file to the client computers at the branch office.

**Answer:** D

**QUESTION:** 3

You are setting up an ISA Server computer named ISA1. This server will provide Internet access for users on your company network. The relevant portion of your network configuration is shown in the exhibit. (Click the Exhibit button.) You have already installed Microsoft Windows 2000 Server and configured ISA1 for Internet access. You are now configuring the internal network adapter. You will be using an IP address of 192.168.0.2/24. You need to finish configuring ISA1 so that it can transmit packets to all computers on your network. What should you do?



- A. In the TCP/IP properties for the internal network adapter, specify a default gateway with the address 192.168.0.1.
- B. In the TCP/IP properties for the external network adapter, add an additional default gateway with the address 192.168.0.1.
- C. From a command prompt, issue this command: `route -f add 0.0.0.0 mask 255.255.255.0 192.168.0.1`
- D. From a command prompt, issue this command: `route -f add 0.0.0.0 mask 255.255.252.0 192.168.0.1`
- E. From a command prompt, issue this command: `route -p add 192.168.9.0 mask 255.255.255.0 192.168.0.1`
- F. From a command prompt, issue this command: `route -p add 192.168.8.0 mask 255.255.252.0 192.168.0.1`

**Answer:** F

**QUESTION:** 4

You are the administrator of your company's network. The network consists of a single Active Directory forest that contains three Microsoft Windows 2000 domains. Users on the network use different Web browsers to connect to the Internet. Windows NT Server 4.0 computers that run Microsoft Proxy Server 2.0 control Internet access. Company policy states that all outgoing requests to the Internet must be authenticated. You want to migrate the Windows NT Server 4.0 computers that run Proxy Server to Windows 2000 Server computers that run ISA Server. You stop the Proxy Server services. You upgrade the Windows NT Server 4.0 computers to Windows 2000, and then you install ISA Server on the Windows 2000 Server computers. You configure the listener for outgoing Web requests to use port 80. After the migration, some users report that they cannot connect to the Internet. Other users report no difficulty connecting to the Internet. You want to ensure that all users can connect to the Internet. What should you do?

- A. Enable the Publish automatic discovery information option for port 8080.
- B. Enable Basic authentication for outgoing Web requests.
- C. Disable Integrated Windows authentication for outgoing Web requests.
- D. Configure listeners individually per IP address for outgoing Web requests.
- E. Enable the Ask unauthenticated users for identification option for outgoing Web requests.

**Answer:** B

**QUESTION:** 5

You are the administrator of your company network. You recently upgraded your Microsoft Proxy Server 2.0 computer to ISA Server. Before the upgrade, the Proxy Server computer was your Web server. It also published Web content on the Internet. After the

upgrade, you discover that the Web server component on the ISA Server computer no longer functions. You issue a command to view the active connections on the ISA Server computer. The output of the command is shown in the exhibit. (Click the Exhibit button.) You want to restore Web server functionality to the ISA Server computer. You will use the Microsoft Management Console (MMC) to accomplish this goal. Which two actions should you take? (Each correct answer presents part of the solution. Choose two.)

```

Active Connections

Proto Local Address           Foreign Address         State
TCP   0.0.0.0:135              0.0.0.0:0              LISTENING
TCP   0.0.0.0:445              0.0.0.0:0              LISTENING
TCP   0.0.0.0:1050             0.0.0.0:0              LISTENING
TCP   0.0.0.0:1051             0.0.0.0:0              LISTENING
TCP   0.0.0.0:1062             0.0.0.0:0              LISTENING
TCP   0.0.0.0:1144             0.0.0.0:0              LISTENING
TCP   0.0.0.0:1723             0.0.0.0:0              LISTENING
TCP   0.0.0.0:3372             0.0.0.0:0              LISTENING
TCP   131.107.2.1:139          0.0.0.0:0              LISTENING
TCP   131.107.2.1:1154        0.0.0.0:0              LISTENING
TCP   131.107.2.1:1154        192.168.0.1:139        ESTABLISHED
TCP   192.168.0.254:139       0.0.0.0:0              LISTENING
TCP   192.168.0.254:139       192.168.0.1:4657       ESTABLISHED
TCP   192.168.0.254:1029     192.168.0.1:445        TIME_WAIT
TCP   192.168.0.254:1140     192.168.0.1:135        TIME_WAIT
TCP   192.168.0.254:1141     192.168.0.1:1028       TIME_WAIT
TCP   192.168.0.254:1144     192.168.0.1:445        ESTABLISHED
TCP   192.168.0.254:1151     192.168.0.1:139        TIME_WAIT

```

- A. In the MMC for Internet Information Services (IIS), change the port used by the Web server to TCP port 8080. Start the WWW Publishing Service.
- B. In the MMC for Internet Information Services (IIS), change the port used by the Web server to TCP port 81. Start the WWW Publishing Service.
- C. In the MMC for ISA Server, create a site and content rule that allows IP traffic to all internal destinations.
- D. In the MMC for ISA Server, create a Web publishing rule that redirects external HTTP requests to the internal network adapter of the ISA Server.
- E. In the MMC for ISA Server, create a packet filter that allows external traffic on the TCP port used for HTTP requests.

**Answer:** B, D

### QUESTION: 6

You are the network administrator for your company. The network includes a single Microsoft Windows 2000 domain and an ISA Server array named Array1. Array1 is used by all network users and provides the only connection between your company's network and the Internet. You purchase a new Windows 2000 Server computer named ServerC. You run ISA Server Setup on ServerC and instruct Setup to join ServerC to Array1. You receive the following error message: "Unable to locate Array1." You cancel Setup. You verify that the network DNS server is functioning properly. You also verify that ServerC has the correct IP configuration settings, including the IP address of the DNS server. You need to install ISA Server on ServerC and ensure that ServerC is a member of Array1. What should you do?

- A. On ServerC, run the msisaent.exe application from the ISA Server CD-ROM. Rerun ISA Server Setup.
- B. Join ServerC to the domain. Log on to ServerC as a member of the Domain Admins user group. Rerun ISA Server Setup.
- C. Add an SRV (service) resource record to the DNS server. Configure the SRV record with the IP address of ServerC. Rerun ISA Server Setup.
- D. Obtain a volume license product key for ISA Server. Rerun ISA Server Setup and provide the volume license product key when Setup requests a CD key.

**Answer:** B

**QUESTION:** 7

Your company network consists of a single Microsoft Windows 2000 site. It includes an ISA Server enterprise array consisting of a single computer named ISA1. You install ISA Server on a new computer, which you name ISA2. You decide to add ISA2 to the array on a different subnet in the same Windows 2000 site. ISA2 successfully joins the enterprise array, and the setup log file indicates that the setup was successful. Your SecureNAT and Firewall client computers are still capable of accessing Internet resources through the default enterprise policies of ISA1. However, these computers cannot access Internet resources through ISA2. You must enable ISA2 to provide access to Internet resources. What should you do?

- A. Create a custom enterprise policy setting for ISA2. Enable outbound client access through the new policy.
- B. Disable array-level access rules that restrict your enterprise policies.
- C. Delete the ISA installation directory. Run the installation again.
- D. Edit the local address table to ensure that it contains only address ranges from your company network.

**Answer:** D

**QUESTION:** 8

You are preparing an existing Microsoft Windows 2000 Server computer to use as an ISA Server computer. This computer will protect your internal network. It currently provides a dial-on-demand VPN connection to a remote office. It also provides network address translation. This computer will continue to provide all its current functionality after it is configured as an ISA Server computer. You want to pre-configure and install ISA Server with the least possible administrative effort. Which two actions should you take? (Each correct answer presents part of the solution. Choose two.)

- A. In the Routing and Remote Access console, delete the external interface used for the Network Address Translation (NAT) protocol.

## Pass4SureOfficial.com Lifetime Membership Features;

- Pass4SureOfficial Lifetime Membership Package includes over **2500** Exams.
- **All** exams Questions and Answers are included in package.
- **All** Audio Guides are included **free** in package.
- **All** Study Guides are included **free** in package.
- **Lifetime** login access.
- Unlimited download, no account expiry, no hidden charges, just one time \$99 payment.
- **Free updates** for Lifetime.
- **Free Download Access** to All new exams added in future.
- Accurate answers with explanations (If applicable).
- Verified answers researched by industry experts.
- Study Material **updated** on regular basis.
- Questions, Answers and Study Guides are downloadable in **PDF** format.
- Audio Exams are downloadable in **MP3** format.
- **No authorization** code required to open exam.
- **Portable** anywhere.
- 100% success **Guarantee**.
- **Fast**, helpful support 24x7.

View list of All exams (Q&A) downloads

<http://www.pass4sureofficial.com/allexams.asp>

View list of All Study Guides (SG) downloads

<http://www.pass4sureofficial.com/study-guides.asp>

View list of All Audio Exams (AE) downloads

<http://www.pass4sureofficial.com/audio-exams.asp>

Download All Exams Samples

<http://www.pass4sureofficial.com/samples.asp>

To purchase \$99 Lifetime Full Access Membership click here

<http://www.pass4sureofficial.com/purchase.asp>

3COM	CompTIA	Filemaker	IBM	LPI	OMG	Sun
ADOBE	ComputerAssociates	Fortinet	IISFA	McAfee	Oracle	Sybase
APC	CWNP	Foundry	Intel	McData	PMI	Symantec
Apple	DELL	Fujitsu	ISACA	Microsoft	Polycom	TeraData
BEA	ECCouncil	GuidanceSoftware	ISC2	Mile2	RedHat	TIA
BICSI	EMC	HDI	ISEB	NetworkAppliance	Sair	Tibco
CheckPoint	Enterasys	Hitachi	ISM	Network-General	SASInstitute	TruSecure
Cisco	ExamExpress	HP	Juniper	Nokia	SCP	Veritas
Citrix	Exin	Huawei	Legato	Nortel	See-Beyond	Vmware
CIW	ExtremeNetworks	Hyperion	Lotus	Novell	SNIA	

