

# 4H0-110

## Hyperion

### Hyperion Essbase 6

*OfficialCerts.com is a reputable IT certification examination guide, study guides and audio exam provider. We ensure that you pass your 4H0-110 exam in first attempt and also get high scores to acquire Hyperion certification.*

*If you use OfficialCerts 4H0-110 Certification questions and answers, you will experience actual 4H0-110 exam questions/answers. We know exactly what is needed and have all the exam preparation material required to pass the exam. Our Hyperion exam prep covers over 95% of the questions and answers that may be appeared in your 4H0-110 exam. Every point from pass4sure 4H0-110 PDF, 4H0-110 review will help you take Hyperion 4H0-110 exam much easier and become Hyperion certified.*

*Here's what you can expect from the OfficialCerts Hyperion 4H0-110 course:*

- \* Up-to-Date Hyperion 4H0-110 questions as experienced in the real exam.*
- \* 100% correct Hyperion 4H0-110 answers you simply can't find in other 4H0-110 courses.*
- \* All of our tests are easy to download. Your file will be saved as a 4H0-110 PDF.*
- \* Hyperion 4H0-110 brain dump free content featuring the real 4H0-110 test questions.*

*Hyperion 4H0-110 certification exam is of core importance both in your Professional life and Hyperion certification path. With Hyperion certification you can get a good job easily in the market and get on your path for success. Professionals who passed Hyperion 4H0-110 exam training are an absolute favorite in the industry. You will pass Hyperion 4H0-110 certification test and career opportunities will be open for you.*

<http://janetdailey.com/?certs=exams.asp?examcode=4H0-110>



Exam Name:	Hyperion Essbase 6 Certification Exam		
Exam Type	Hyperion		
Exam Code:	4H0-110	Total Questions:	142

**Question: 1**

When loading data into an Essbase database that contains Attribute dimensions.\_\_\_\_\_

- A. you can load data to members in Attribute dimensions
- B. each Attribute dimension must be represented in the data load
- C. attribute associations with Base dimensions can be done after data load
- D. attribute associations with Base dimensions are derived during the data load

**Answer: C**

**Question: 2**

**Exhibit:**

The exhibit shows a screenshot of the 'Data Prep Editor' window. The main window displays a list of five records with their corresponding fields. Below the list is a table with 7 columns: Field 1, Field 2, Field 3, Field 4, Field 5, Field 6, and Field 7. The records are as follows:

	Field 1	Field 2	Field 3	Field 4	Field 5	Field 6	Field 7
1	1998	Actual	California	Cola	Sales	jan	145
2	1998	Actual	California	Caffeine Free Cola	Sales	jan	121
3	1999	Budget	California	Cola	Sales	jan	130
4	1999	Budget	California	Caffeine Free Cola	Sales	jan	115
5	1998	Actual	California	Cola	Sales	feb	190

Below the table is a 'Select Record' dialog box. It has a 'Field' section with 'Type' (String, Number) and 'Boolean' (And, Or) options. The 'String/Number' field is empty. The 'Condition' list includes: Equal To, Not Equal To, Greater Than, Greater than or Equal To, Less Than, Less than or Equal To, Contains, and Does Not Contain. The 'Add', 'Change', and 'Delete' buttons are visible. The 'String/Number', 'Condition', and 'Case Sensitive' columns are populated with the following data:

String/Number:	Condition:	Case Sensitive:
125	>=	N
190	<>	N

Given the Rules files in the exhibit, how many row (s) will NOT be loaded?

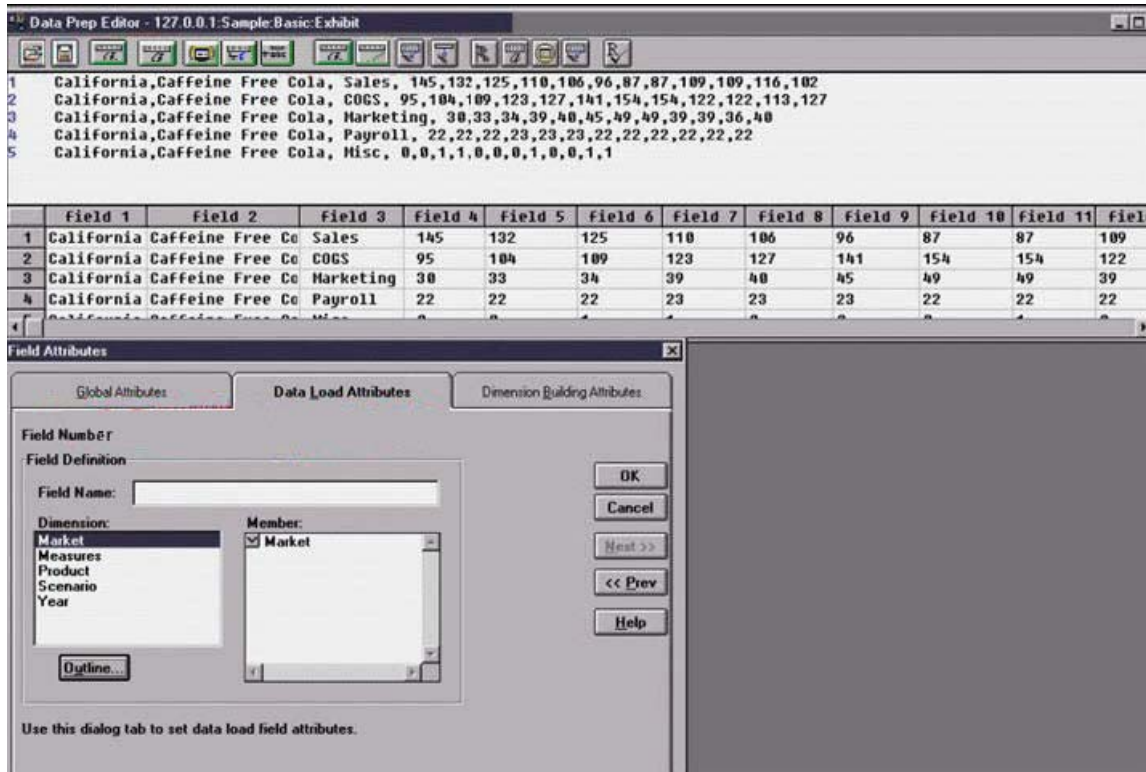
- A. 1
- B. 2
- C. 3

Exam Name:	Hyperion Essbase 6 Certification Exam		
Exam Type	Hyperion		
Exam Code:	4H0-110	Total Questions:	142

- D. 4
- E. 5

**Answer: C**

**Question: 3**  
**Exhibit:**



Given the Rules file in the exhibit, what is the correct heading for field 9?

- A. DATA
- B. A member name
- C. A dimension name
- D. Numeric Attribute type

**Answer: B**

**Question: 3**  
How can you improve dataload speed? (choose two)

- A. Load the file from the client
- B. Load the file from the server
- C. Sort data file in order by Dense dimensions
- D. Sort data file in order by Sparse dimensions

**Answer: B, D**

**Question: 5**  
Which level of access can limit a user to a subsection of a database?

Exam Name:	Hyperion Essbase 6 Certification Exam		
Exam Type	Hyperion		
Exam Code:	4H0-110	Total Questions:	142

- A. Read
- B. Filter
- C. Calculate
- D. Read/Write
- E. Database Designer

**Answer: B**

**Question: 6**

What is the approximate maximum size for each database page file?

- A. 200 MB
- B. 1 GB
- C. 2 GB
- D. 4 GB

**Answer: C**

**Question: 7**

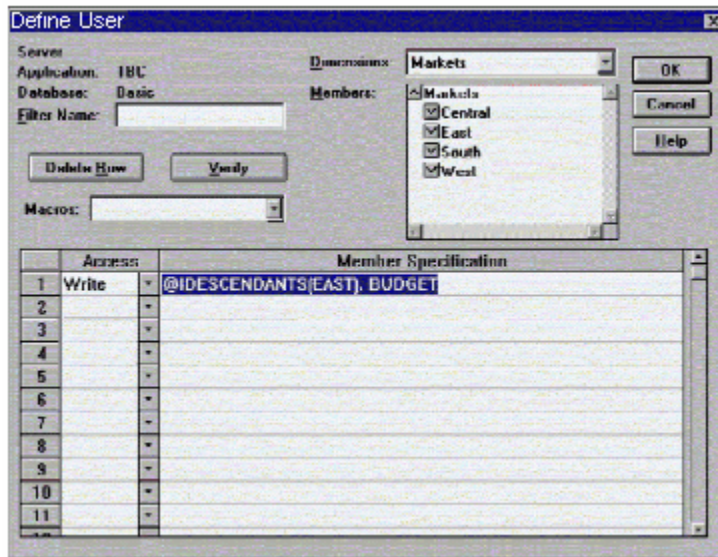
A corporate database has three partitions, one for each of three divisions. When updating the partitions, which database will be validated through VALIDATEPARTITIONDEFFILE in ESSCMD?

- A. Corporate only
- B. The three divisions only
- C. Corporate and the three divisions
- D. Corporate and the divisions with linked partitions only

**Answer: C**

**Question: 8**

**Exhibit:**



Given the filter in the exhibit, which two statements are true? (choose two)

- A. Read access is granted to the market East OR the Scenario Budget.

## OfficialCerts.com Certification Exam Full Version Features;

- Verified answers researched by industry experts.
- Exams **updated** on regular basis.
- Questions, Answers are downloadable in **PDF** format.
- **No authorization** code required to open exam.
- **Portable** anywhere.
- 100% success **Guarantee**.
- **Fast**, helpful support 24x7.

View list of All exams we offer;

<http://www.officialcerts.com/allexams.asp>

To contact our Support;

<http://www.officialcerts.com/support.asp>

View FAQs

<http://www.officialcerts.com/faq.asp>

Download All Exams Samples

<http://www.officialcerts.com/samples.asp>

To purchase Full Version and updated exam;

<http://www.officialcerts.com/allexams.asp>



Shop now using **PayPal**



3COM	CompTIA	Filemaker	IBM	LPI	OMG	Sun
ADOBE	ComputerAssociates	Fortinet	IISFA	McAfee	Oracle	Sybase
APC	CWNP	Foundry	Intel	McData	PMI	Symantec
Apple	DELL	Fujitsu	ISACA	Microsoft	Polycom	TeraData
BEA	ECCouncil	GuidanceSoftware	ISC2	Mile2	RedHat	TIA
BICSI	EMC	HDI	ISEB	NetworkAppliance	Sair	Tibco
CheckPoint	Enterasys	Hitachi	ISM	Network-General	SASInstitute	TruSecure
Cisco	ExamExpress	HP	Juniper	Nokia	SCP	Veritas
Citrix	Exin	Huawei	Legato	Nortel	See-Beyond	Vmware
CIW	ExtremeNetworks	Hyperion	Lotus	Novell	Google	

*You have made the*  
**Right Choice**

You are becoming member of most comprehensive, accurate, highest quality and lowest cost certification resource in the world.

